



Magnetic Lights

Magnetic Lights

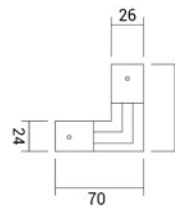
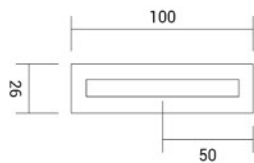
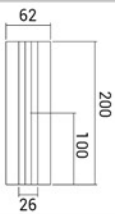
www.shoaco.com



SH-MCWRC-2M

SH-MSRC-2M

SH-MSCC-2M

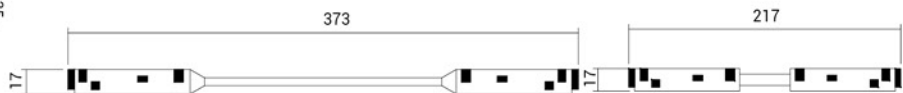
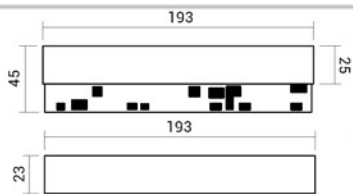


SH-MD200-2M

SH-MD100-2M

SH-MEAC-2M

SH-MEDC-2M



Magnetic Lights



Magnetic Lights

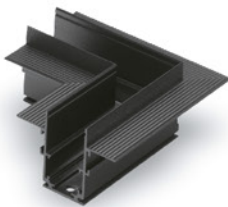
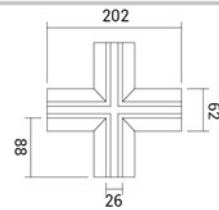
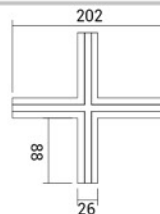
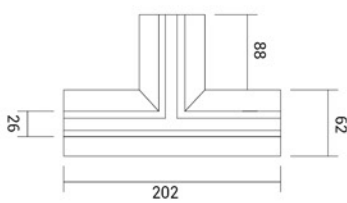
www.shoaco.com



SH-MCC3W-2M

SH-MSCC4W-2M

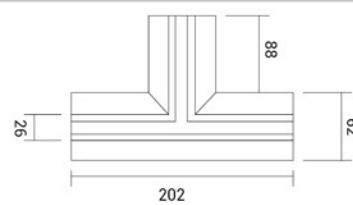
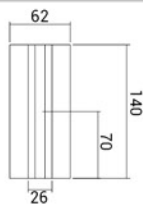
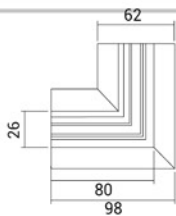
SH-MCC4W-2M



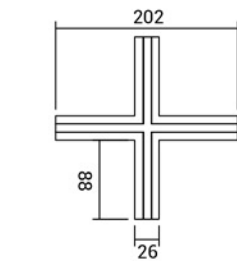
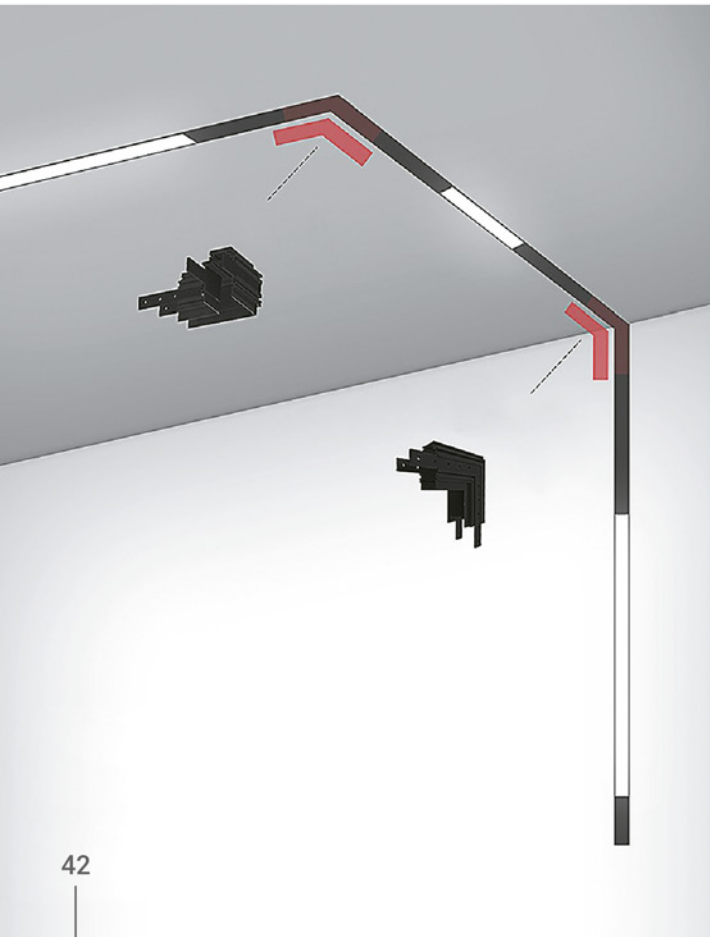
SH-MCCRC-2M

SH-MWCRC-2M

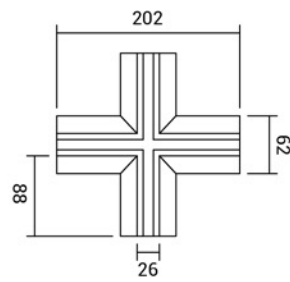
SH-MSCC3W-2M



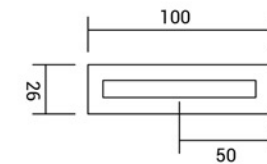
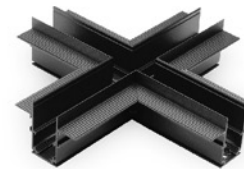
INSERT CORNERS



SH-MSCC4W-2M



SH-MCC4W-2M

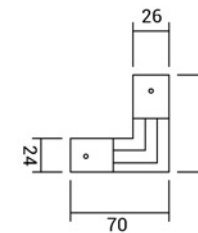


SH-MSRC-2M

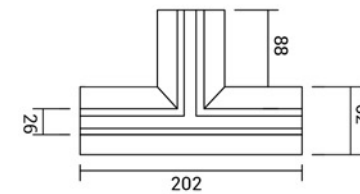


Description **اتصالات مکانیکال ریل توکار و روکار**

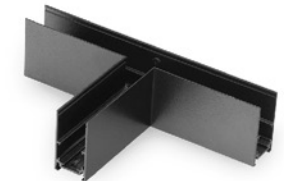
اتصالات مکانیکال تعبیه شده برای زوایای مختلف ریل های توکار و روکار ریل مگنتی مراحل نصب را سرعت می بخشد. این اتصالات همچنین جزییات نصب با کیفیت بالایی در پروژه ها در اختیارمان می گذارد.



SH-MSCC-2M

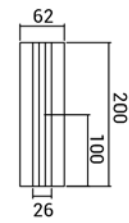


SH-MSCC3W-2M

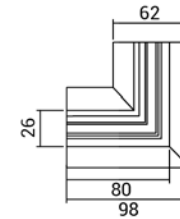
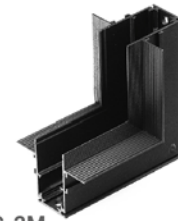




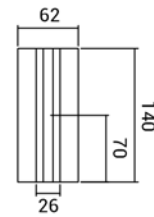
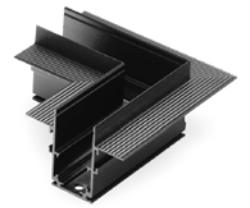
CEILING CORNER JOINT



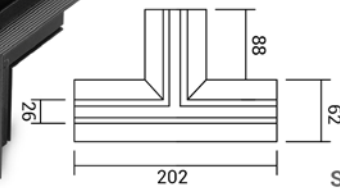
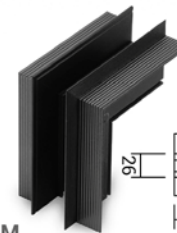
SH-MCWRC-2M



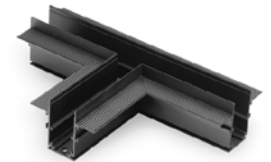
SH-MCCRC-2M

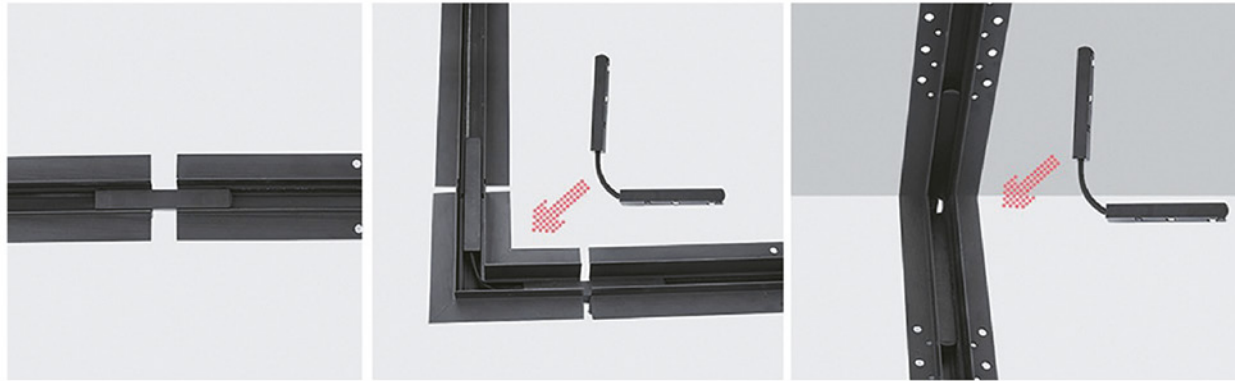


SH-MWCRC-2M



SH-MCC3W-2M





Description منبع تغذیه و اتصالات الکتریکال

منبع تغذیه ۴۸ ولتی جریان مستقیم به صورت اتصال مگنتی داخل ریل توکار و روکار قرار می‌گیرد. درایور به صورت مگنت داخل ریل قرار می‌گیرد. این نوع اتصال منبع تغذیه و کانکتورهای الکتریکال موجود قابلیت اضافه کردن چراغ‌های بیشتری حتی بعد از نصب ریل‌ها را برای کارفرما فراهم می‌کند.

Technical Data

Code of Product	SH-MD100-2M
Power	100 Watt
Beam Angle	-----
Color Temperature	-----
Light Efficiency	-----
Color Rendering Index	-----
Operating Temperature	-20 ~ +50
Rated Life Hours	35000-50000 Hours
Led Chip	-----

Dimension

